
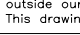
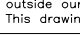


14	PIN DIN1481 DIA05x22	9C67300	1			
13	UNION MALE GE16-PSR	1773500	1			
12	SUSPENSION CYLINDER	9B73273	1			
11	PIN DIN1481 DIA05x26	9A17638	1			
10	MAGNET MODIFIED	9B29614	2			
9	SCREW DIN912 M06x12	0780300	2			
8	SCREW DIN912 M10x20	1051900	4			
7	RAM HEAD	9B26272	1			
6	CYLINDER DIA40	9B27213	1			
5	SCREW DIN912 M10x150-12.9	9B31173	4			
④	HEAT SHIELD CYLINDER	9E00473	1			
3	SPACER	9B30845	1			
2	ROD SPACER	9B30852	1			
①	1	CYLINDER HEAD ASSY DIA50	9C46049	1		
ITEM	DESIGNATION	NUMBER	QTY.			WEIGHT
 <b>VESUVIUS</b>			WEIGHT			
 This drawing is the property of VESUVIUS and must not be copied or disclosed outside our company without written permission. This drawing must be returned after use.			DRAWN	04/04/2006	CCO	
			APPROVED FOR MANUFACTURING	04/04/2006	LR	
			 SCALE: 1 / 1			
TITLE			MOD.	NUMBER	VERS.	
PLATE LOADER EXTENDED ASSY DIA40			CNC	9C67151	1	

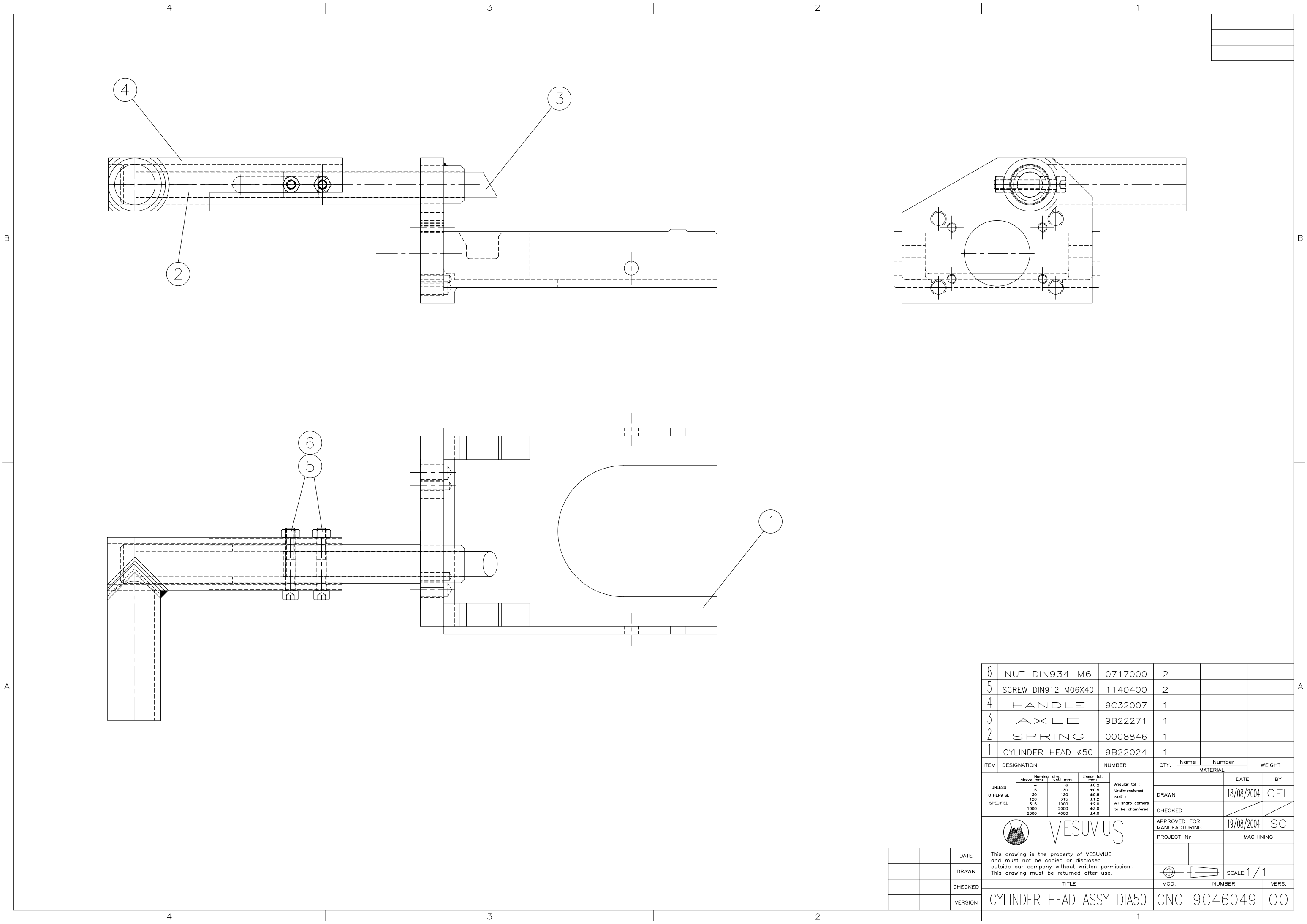
TRACABILITY PUR 34  
- Markings must be easily readable  
- Mark Vesuvius logo + Supplier Initials ex. : (DD)


VESUVIUS SYSTEMS GHLIN - ITEM'S PART LIST 1st LEVEL

CNC 9C67151 9C67151-01 PLATE LOADER EXTENDED ASSY DIA A1

Component	Dwg Nbr	Mark.	Description	Qty	U	Sz
1 9C46049	9C46049-01	1	CYLINDER HEAD ASSY DIA50	1,000	PC	A1
1 9B30852	9B30852-03	2	ROD SPACER	1,000	PC	A3
1 9B30845	9B30845-04	3	SPACER	1,000	PC	A3
1 9E00473	9E00473-00	4	HEAT SHIELD CYLINDER	1,000	PC	A1
1 9B31173	9B31173	5	SCREW DIN912 M10X150-12.9	4,000	PC	A4
1 9B27213	9B27213-02	6	CYLINDER DIA40 CNC	1,000	PC	A2
1 9B26272	9B26272-04	7	RAM HEAD	1,000	PC	A3
1 1051900	1051900	8	SCREW DIN912 M10X20	4,000	PC	A4
1 0780300	0780300	9	SCREW DIN912 M06X12	2,000	PC	A4
1 9B29614	9B29614-00	10	MAGNET MODIFIED	2,000	PC	A3
1 9A17638	9A17638	11	PIN DIN1481 DIA05X26	1,000	PC	A4
1 9B73273	9B73273-02	12	SUSPENSION CYLINDER	1,000	PC	A3
1 1773500	1773500	13	UNION MALE GE 16-PSR	1,000	PC	A4
1 9C67300	9C67300	14	PIN DIN1481 DIA05 X22	1,000	PC	A4

\*\*\* END \*\*\*



6	NUT DIN934 M6	0717000	2				
5	SCREW DIN912 M06X40	1140400	2				
4	HANDLE	9C32007	1				
3	AXLE	9B22271	1				
2	SPRING	0008846	1				
1	CYLINDER HEAD Ø50	9B22024	1				
ITEM	DESIGNATION	NUMBER	QTY.	Name	Number	WEIGHT	
				MATERIAL			
UNLESS OTHERWISE SPECIFIED	Nominal dim. until mm:		Linear tol. mm:	Angular tol : Undimensioned radii : All sharp corners to be chamfered.			
	Above mm:						
	6	30	±0.2				
	30	120	±0.5				
	120	315	±0.8				
	315	1000	±1.2				
1000	2000	±2.0					
2000	4000	±3.0					
				DATE			
VESUVIUS				BY			
This drawing is the property of VESUVIUS and must not be copied or disclosed outside our company without written permission. This drawing must be returned after use.				DRAWN		18/08/2004	GFL
				CHECKED			
				APPROVED FOR MANUFACTURING		19/08/2004	SC
				PROJECT Nr		MACHINING	
				SCALE: 1 / 1			
TITLE				MOD.	NUMBER	VERS.	
CYLINDER HEAD ASSY DIA50				CNC	9C46049	00	

VESUVIUS SYSTEMS GHLIN - ITEM'S PART LIST 1st LEVEL

CNC 9C46049      9C46049-00      CYLINDER HEAD ASSY DIA50      A1

Component		Dwg Nbr	Mark.	Description	Qty	U	Sz
1	9B22024	9B22024-01	1	CYLINDER HEAD DIA50 CNC	1,000	PC	A1
1	0008846	0008846	2	SPRING	1,000	PC	A4
1	9B22271	9B22271-00	3	AXLE	1,000	PC	A3
1	9C32007	9C32007-01	4	HANDLE	1,000	PC	A2
1	1140400	1140400	5	SCREW DIN912 M06X40	2,000	PC	A4
1	0717000	0717000	6	NUT DIN934 M06	2,000	PC	A4

\*\*\* END \*\*\*



VESUVIUS SYSTEMS GH LIN - ITEM'S PART LIST 1st LEVEL

CNC 9B27213 9B27213-01

CYLINDER DIA40

A2

Component	Dwg Nbr	Mark.	Description	Qty	U	Sz
1 9A13306	9A13306-01		SET OF SEALS	1,000	PC	PL
1 9A05575	9A05575-02	1	CYLINDER GLAND DIA40	1,000	PC	A3
1 9B27155	9B27155-02	2	CYLINDER BARREL DIA40	1,000	PC	A2
1 9A05609	9A05609-04	6	CYLINDER ROD DIA40	1,000	PC	A3

\*\*\* END \*\*\*

VESUVIUS SYSTEMS GH LIN - ITEM'S PART LIST 1st LEVEL

CNC 9A13306      9A13306-01      SET OF SEALS      PL

	Component	Dwg Nbr	Mark.	Description	Qty	U	Sz
1	9A09023	9A09023	3	PISTON SEAL	1,000	PC	A4
1	9A09015	9A09015-00	4	PISTON GUIDING SEAL	2,000	PC	A3
1	9A17612	9A17612	5	O-RING 50.39X3.53 VITON	1,000	PC	A4
1	0009434	0009434-00	7	ROD GUIDING SEAL	1,000	PC	A3
1	0009666	0009666	8	ROD SEAL	1,000	PC	A4
1	0009443	0009443	9	SCRAPER RING 30X22X7	1,000	PC	A4

\*\*\* END \*\*\*